

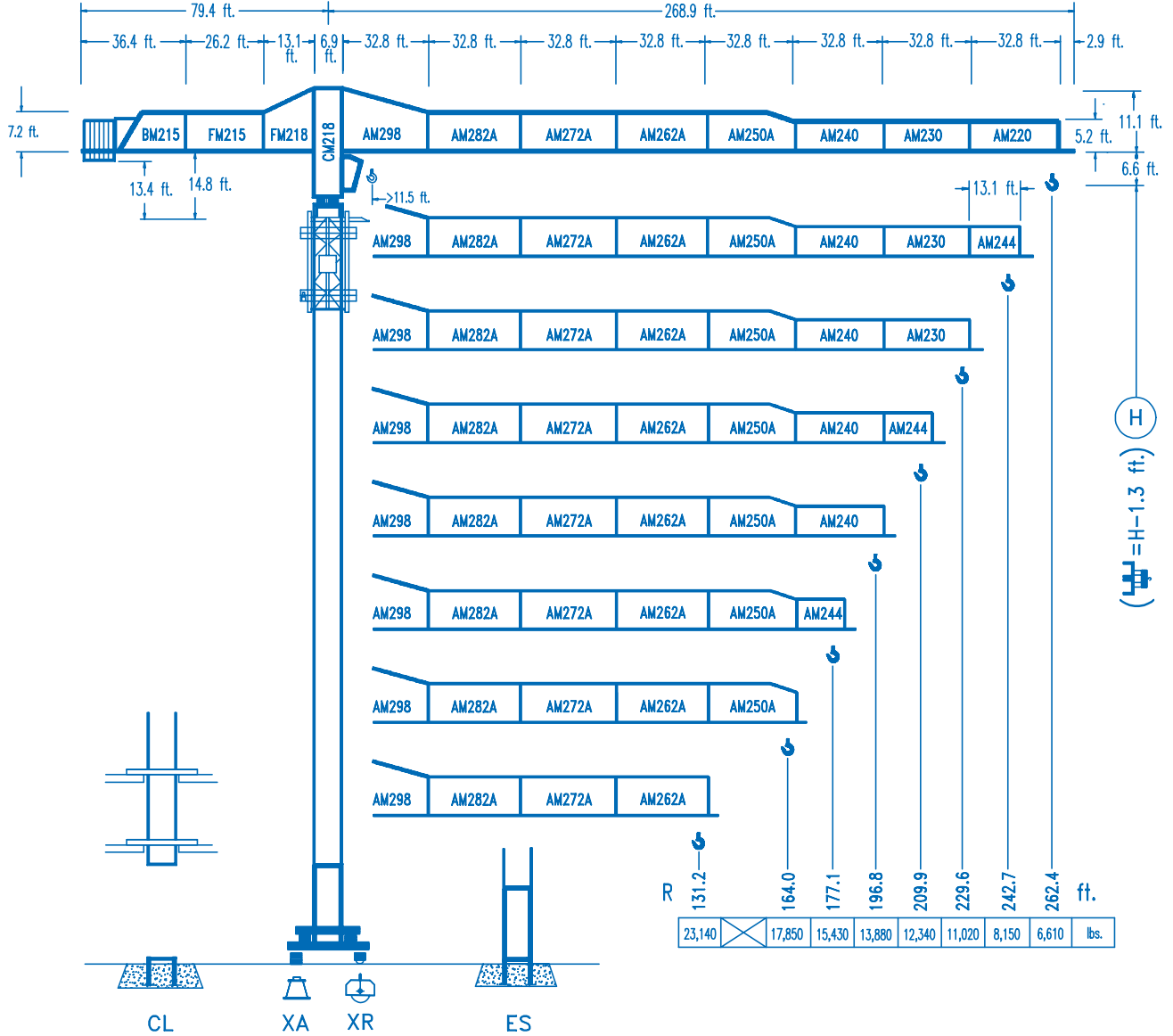


**COMANSA**

**LINDEN 2100**

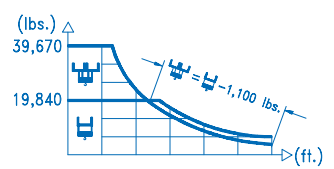
**21 LC 400**

**39,670 lbs.**



**CE**  
DIN 15018 H1 B3

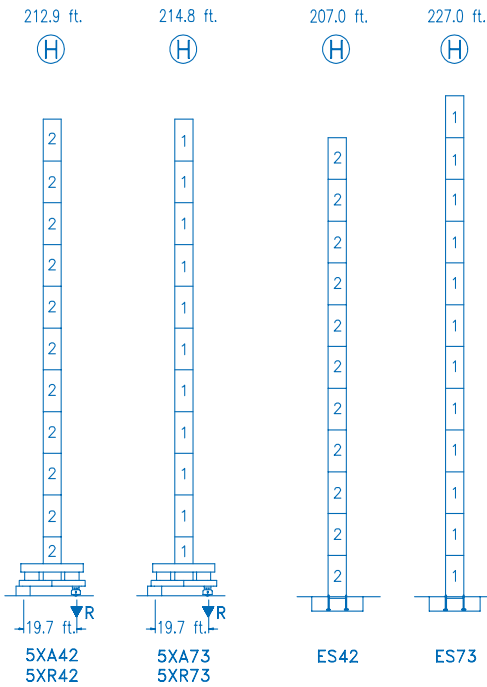
| R     | H      |        |        |        |        |        |        |        |        |        |        |        |       |       |       |      |
|-------|--------|--------|--------|--------|--------|--------|--------|--------|--------|--------|--------|--------|-------|-------|-------|------|
| 262.4 | 54.4   | 65.6   | 82.0   | 98.7   | 100.0  | 111.5  | 131.2  | 144.3  | 164.0  | 177.1  | 196.8  | 209.9  | 229.6 | 242.7 | 262.4 | ft.  |
|       | 39,670 | 32,010 | 24,720 | 19,840 | 19,840 | 17,580 | 14,680 | 13,190 | 11,430 | 10,470 | 9,280  | 8,610  | 7,750 | 7,260 | 6,610 | lbs. |
| 242.7 | 59.0   | 65.6   | 82.0   | 106.3  | 110.2  | 111.5  | 131.2  | 144.3  | 164.0  | 177.1  | 196.8  | 209.9  | 229.6 | 242.7 |       | ft.  |
|       | 39,670 | 35,220 | 27,250 | 19,840 | 19,840 | 19,560 | 16,350 | 14,710 | 12,760 | 11,700 | 10,380 | 9,640  | 8,690 | 8,150 |       | lbs. |
| 229.6 | 71.2   | 82.0   | 98.4   | 111.5  | 111.5  | 129.9  | 135.1  | 144.3  | 164.0  | 177.1  | 196.8  | 209.9  | 229.6 |       |       | ft.  |
|       | 39,670 | 33,750 | 27,420 | 23,730 | 19,840 | 19,840 | 18,440 | 16,030 | 14,720 | 13,100 | 12,190 | 11,020 |       |       |       | lbs. |
| 209.9 | 71.5   | 82.0   | 98.4   | 111.5  | 111.5  | 130.9  | 136.4  | 144.3  | 164.0  | 177.1  | 196.8  | 209.9  |       |       |       | ft.  |
|       | 39,670 | 33,960 | 27,590 | 23,880 | 19,840 | 19,840 | 18,670 | 16,220 | 14,910 | 13,270 | 12,340 |        |       |       |       | lbs. |
| 196.8 | 73.8   | 82.0   | 98.4   | 111.5  | 111.5  | 135.5  | 142.0  | 144.3  | 164.0  | 177.1  | 196.8  |        |       |       |       | ft.  |
|       | 39,670 | 35,240 | 28,660 | 24,830 | 19,840 | 19,840 | 19,500 | 16,970 | 15,590 | 13,880 |        |        |       |       |       | lbs. |
| 177.1 | 72.8   | 82.0   | 98.4   | 111.5  | 111.5  | 133.5  | 140.7  | 144.3  | 164.0  | 177.1  |        |        |       |       |       | ft.  |
|       | 39,670 | 34,690 | 28,200 | 24,430 | 19,840 | 19,840 | 19,300 | 16,780 | 15,430 |        |        |        |       |       |       | lbs. |
| 164.0 | 76.4   | 82.0   | 98.4   | 111.5  | 111.5  | 140.8  | 148.9  | 164.0  |        |        |        |        |       |       |       | ft.  |
|       | 39,670 | 36,710 | 29,860 | 25,900 | 19,840 | 19,840 | 17,850 |        |        |        |        |        |       |       |       | lbs. |
| 131.2 | 80.4   | 82.0   | 98.4   | 111.5  | 111.5  | 131.2  |        |        |        |        |        |        |       |       |       | ft.  |
|       | 39,670 | 38,730 | 31,550 | 27,360 | 23,140 |        |        |        |        |        |        |        |       |       |       | lbs. |



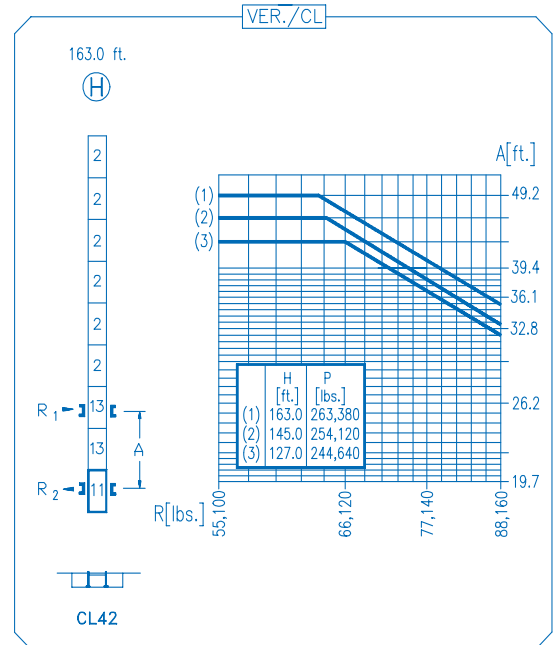
**DS.0406.30**

12/05

Reserva de modificaciones.- Subject to modifications.- Modifications réservées.- Konstruktionsänderungen vorbehalten.



| N Ref.    | φ   | h    |
|-----------|-----|------|
| 1 S35     | 8.2 | 18.0 |
| 2 D23     | 6.6 | 18.0 |
| 13 D23A   | 6.6 | 18.0 |
| 11 CLD23A | 6.6 | 10.2 |



**R. máx.** En servicio  
In operation  
En service  
In Betrieb

**5XR42 ... 294,010 lbs.**  
**5XR73 ... 203,930 lbs.**

**R. máx.** Fuera de servicio  
Out of service  
Hors service  
Ausser Betrieb

**5XR42 ..... 247,290 lbs.**  
**5XR73 ..... 288,500 lbs.**

**CFU-7.5**  
**10 hp.**

0 ↻ 308 ft./min

**GR-12**  
**4 x 88 ft.lbs.**

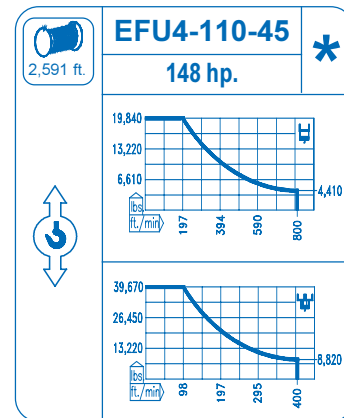
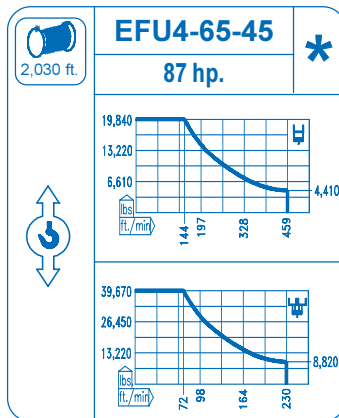
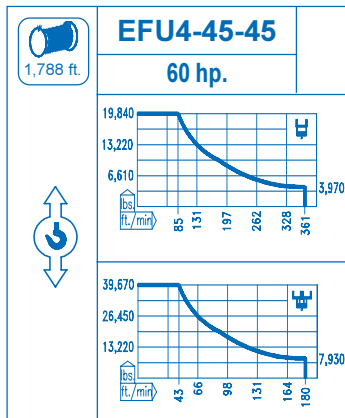
0 ↻ 0.7 rpm

**TRA-7.5**  
**2 x 55 ft.lbs.**

0 ↻ 78 ft./min

**TRA-7.5VC**  
**2 x 55 ft.lbs.**

0 ↻ 78 ft./min



Tensión de alimentación  
Operating voltage  
Tension de service  
Betriebsspannung

**480 V**  
**3 ph**  
**60 Hz**

Opcional  
Optional  
En option  
Kaufoption

**\***