

LINDEN Tower Crane

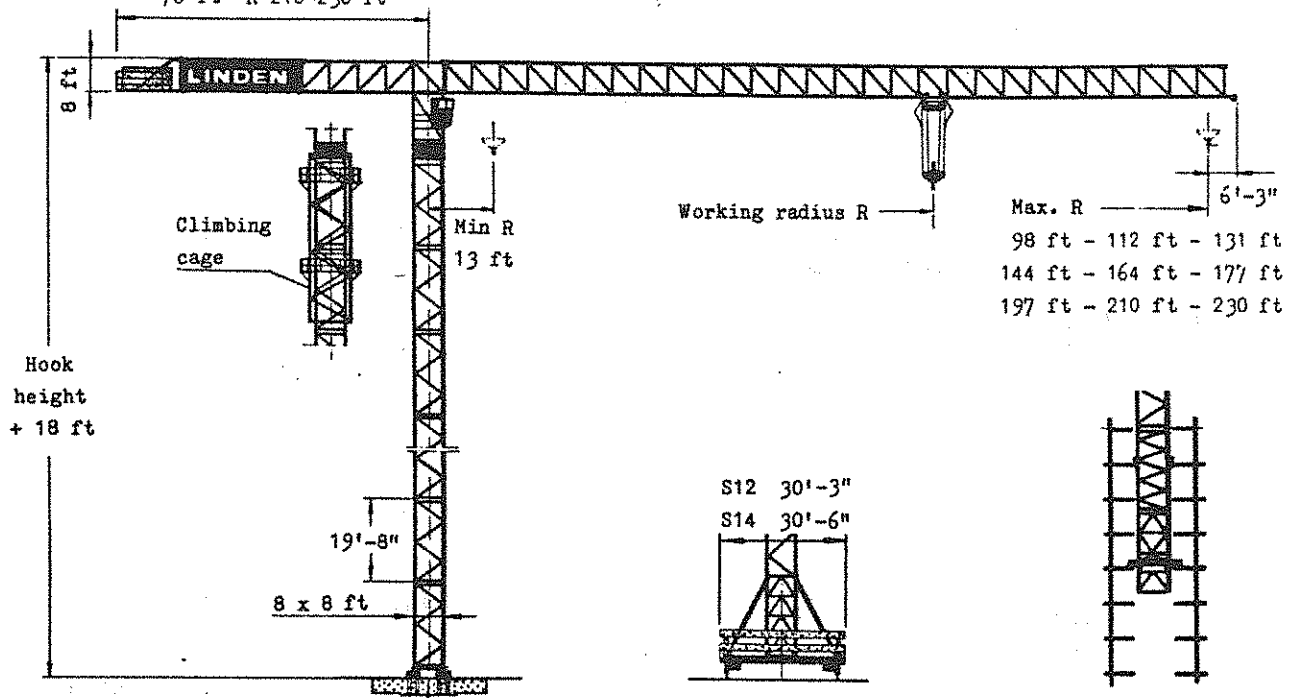
Quick-data

8652

Design Code DIN 15018 H1 B3

Power Supply 440 V 60 Hz

49 ft R 98-144 ft
 62 ft R 164-197 ft
 76 ft R 210-230 ft



Stationary crane

Max free-standing hook height
 264 ft

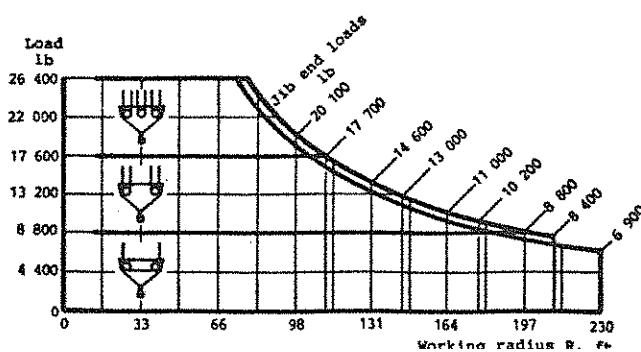
Rail mounted crane

Travelling carriage type	Max free-standing hook height	Rail centre gauge	Min. curve radius
S12	187 ft	26'-3.0"	40 ft
S14	267 ft	26'-3.0"	130 ft

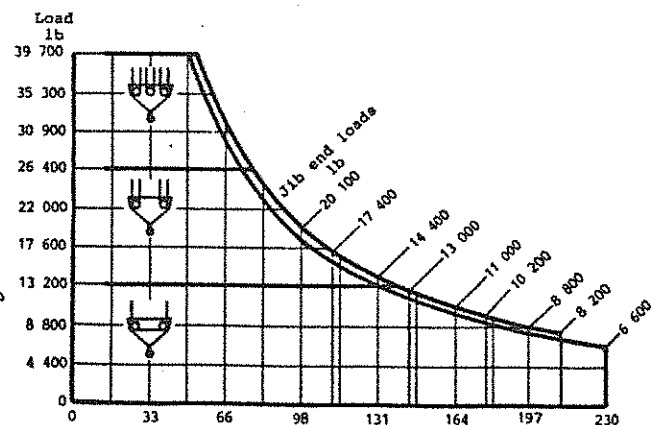
Floor climbing crane

Max hook height above top floor
 136 ft

Hoisting capacity with machineries for max load 26 400 lb



Hoisting capacity with machineries for max load 39 700 lb



HOISTING MACHINERIES, electro-hydraulic

Stepless Speed Control

Max load 26 400 lb

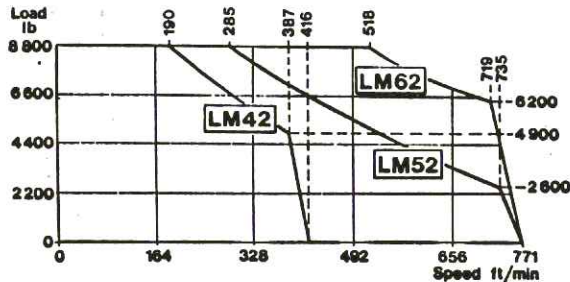
Output type LM42 70 kW
type LM52 100 kW
type LM62 165 kW

Hoisting Speed

Rope Capacity

With 3 rope layers on the drum

2 450 ft



Diagrams for 2-fall rope. For 4-fall rope: 2 x the load and 1/2 speed. For 6-fall rope: 3 x the load and 1/3 speed.

Max load 39 700 lb

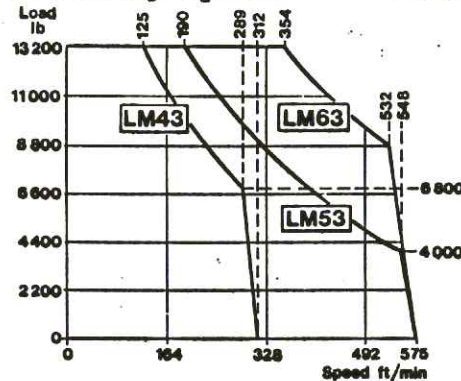
Output type LM43 70 kW
type LM53 100 kW
type LM63 165 kW

Hoisting Speed

Rope Capacity

With 3 rope layers on the drum

1 425 ft



HOISTING MACHINERIES, electro-mechanical

3-step Speed Control

Max load 26 400 lb

Hoisting speed ft/min 2-fall rope

Operation position	Type 75 N12	Type 125 S12	Load lb
1	16	33	0 - 8 800
2	33	62	0 - 8 800
3	236	394	0 - 8 800
High-speed lowering	322 *)	535	0 - 880

4-fall rope: 2 x the load and 1/2 speed

6-fall rope: 3 x the load and 1/3 speed

*) High-speed lowering is not standard

Output kW

Hoisting machinery	Main motor	Creep motor	High-speed lowering motor
75 N12	72	4.3/ 8.6	12.6 *)
125 S12	110	8.6/16.4	17.5

Rope capacity

with 3 rope layers on the drum 875 ft

TRAVELLING CARRIAGES

Travelling speed / Output

Travelling carriage Type	Travelling speed ft/min	Output kW
S12	0 - 110	4 x 5.6
S14	0 - 110	4, 6 or 8 x 5.6

SLEWING MACHINERY

Speed / Output

Max R ft	Speed rpm	Output kW
131	0 - 1.1	2 x 6.7
144 - 164	0 - 0.9	2 x 6.7
177 - 197	0 - 0.9	3 x 6.7
210 - 230	0 - 0.7	3 x 6.7

TROLLEY MACHINERY

Speed / Output

Operation position	Speed ft/min	Output kW
1	30	2.2
2	118	7.6
3	217	7.6

POWER LOAD

Hoisting machinery Type	Main fuse
75 N12	101 kVA 160 A
125 S12	157 kVA 250 A
LM42/LM43	101 kVA 125 A
LM52/LM53	144 kVA 200 A
LM62/LM63	232 kVA 315 A

POWER SUPPLY

440 V 60 Hz 3-phase

For complete information - see TECHNICAL DATA 6652