

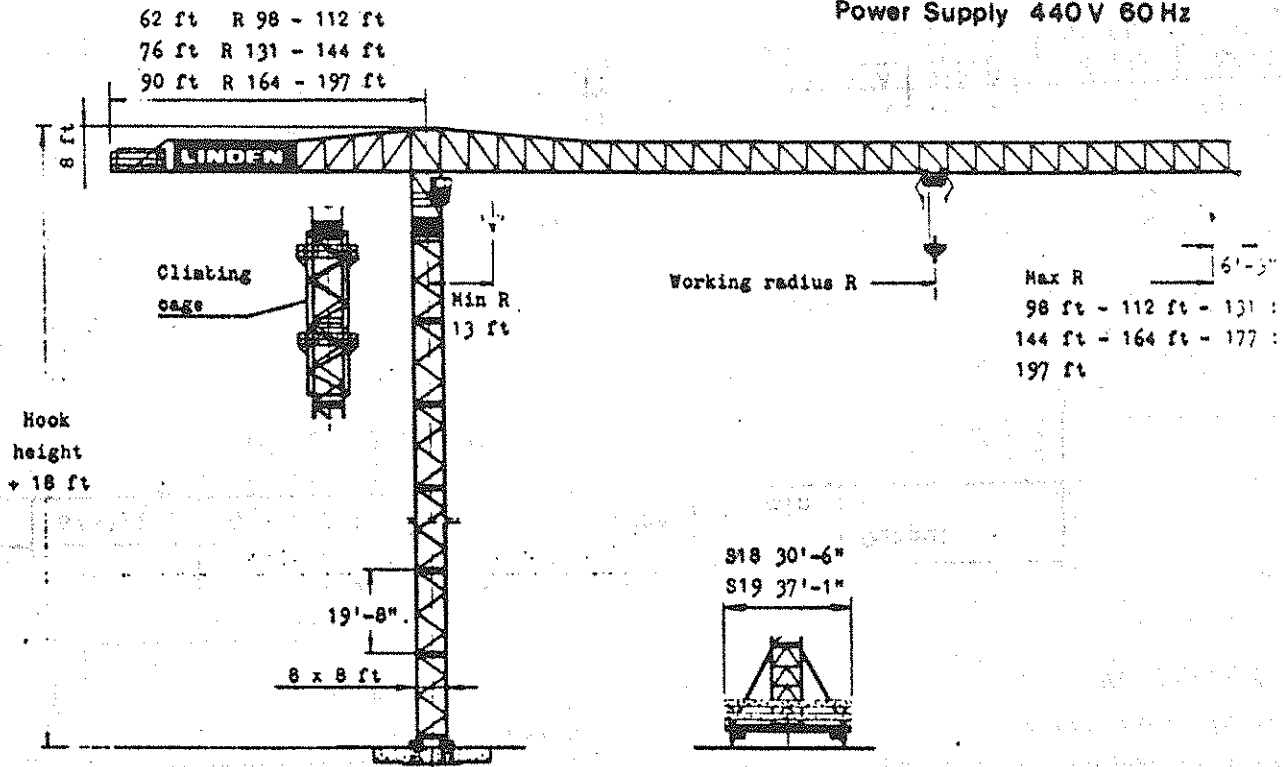
LINDEN Tower Crane

Quick-data

8802

Design Code DIN 15018 H1 B3

Power Supply 440V 60Hz



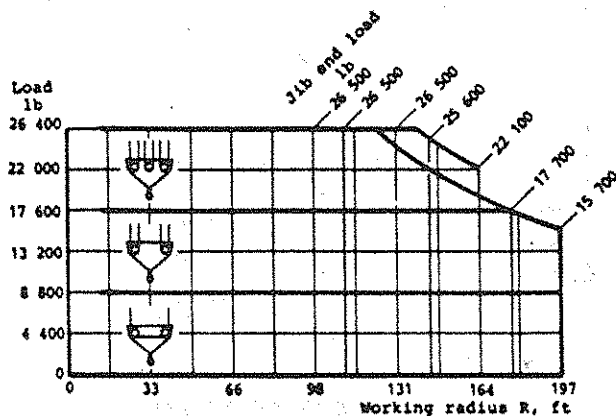
Stationary crane

Max free-standing hook height
284 ft

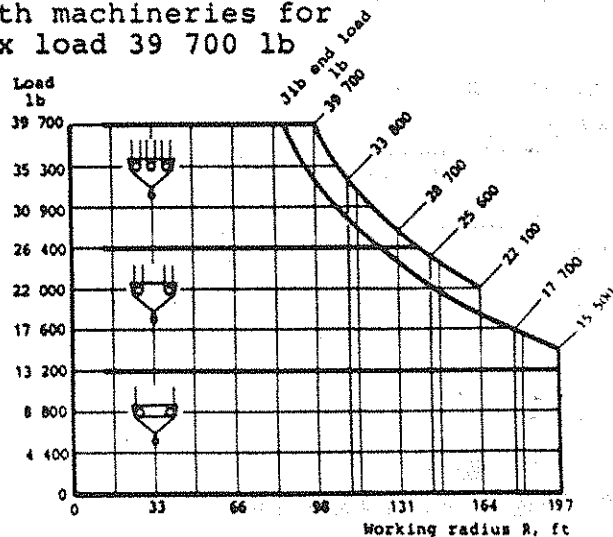
Rail mounted crane

Travelling carriage type	Max free-standing hook height	Rail centre gauge	Min. curve radius
S18	189 ft	26'-3.0"	53 ft
S19	254 ft	32'-9.7"	76 ft

Hoisting capacity with machineries for max load 26 400 lb



Hoisting capacity with machineries for max load 39 700 lb



Tower cranes according to this specification are included in LINDEN MODULAR SYSTEM 8000. On request LINDEN-ALIMAK AB will be pleased to offer other crane compositions which are either within or outside this modular system.

HOISTING MACHINERIES, electro-hydraulic

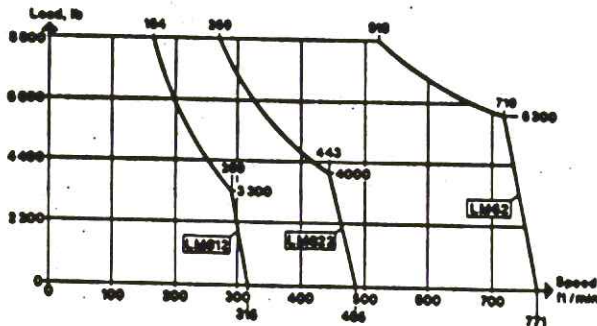
Stepless speed control

Max load 26 400 lb

Type	Output	Rope capacity ¹⁾
LM812	58 kW	1 320 ft
LM822	95 kW	2 120 ft
LM62	165 kW	2 450 ft

1) With 3 rope layers on the drum

Hoisting speed

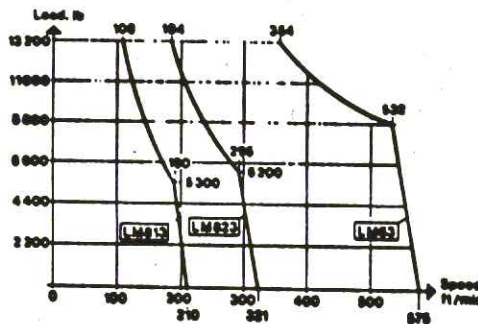


Max load 39 700 lb

Type	Output	Rope capacity ¹⁾
LM813	58 kW	635 ft
LM823	95 kW	1 045 ft
LM63	165 kW	1 425 ft

1) With 3 rope layers on the drum

Hoisting speed



Diagrams for 2-fall rope. 4-fall rope: 2 x the load and 1/2 speed
6-fall rope: 3 x the load and 1/3 speed

HOISTING MACHINERY, electro-mechanical

3-step speed control

Max load 26 400 lb

Type	Output	Rope capacity ¹⁾
75N12	72 kW	875 ft

1) With 3 rope layers on the drum

Hoisting speed, 2-fall rope²⁾

Operating position	ft/min	Load lb
1/2/3	16/33/236	0 - 8 800

2) 4-fall rope: 2 x the load, 1/2 speed
6-fall rope: 3 x the load, 1/3 speed

SLEWING MACHINERY

Speed/Output

Max R ft	Speed rpm	Output kW
98 - 164	0 - 0.9	2 x 6.7
177 - 197	0 - 0.9	3 x 6.7

TROLLEY MACHINERY

Speed/Output

Operating position	Speed ft/min	Output kW
1	30	2.2
2	121	7.6
3	243	7.6

TRAVELLING MACHINERY

Speed/Output

Type	Speed ft/min	Output kW
S18	0 - 80	3 or 4 x 5.5
S19	0 - 80	3 or 4 x 5.5

POWER SUPPLY

440 V 60 Hz 3-phase

Machinery type	Power load	Main fuse
75N12	101 kVA	160 A
LM812/813	96 kVA	125 A
LM822/823	144 kVA	160 A
LM62/63	232 kVA	315 A

For complete information - see TECHNICAL DATA 8802

LINDEN-ALIMAK
AB

Construction Equipment Division, P.O. Box 10611
6-931 03 Skellefteå Sweden Phone 46-910-142 30 Telex 65010, 65083 LINDEN S

It is the policy of LINDEN-ALIMAK AB to improve its products continually. In accordance with this policy, the right is reserved to make changes in specifications and design. The specification herein is only for the purpose of identifying the type of machine, and must not be referred to in any contract of sale, warranty or order confirmation.

HEEDE SOUTHEAST

11608 Downs Rd. Arrowood Industrial Park
P.O. Box 11001 Charlotte, N.C. 28220
(704) 588-3985